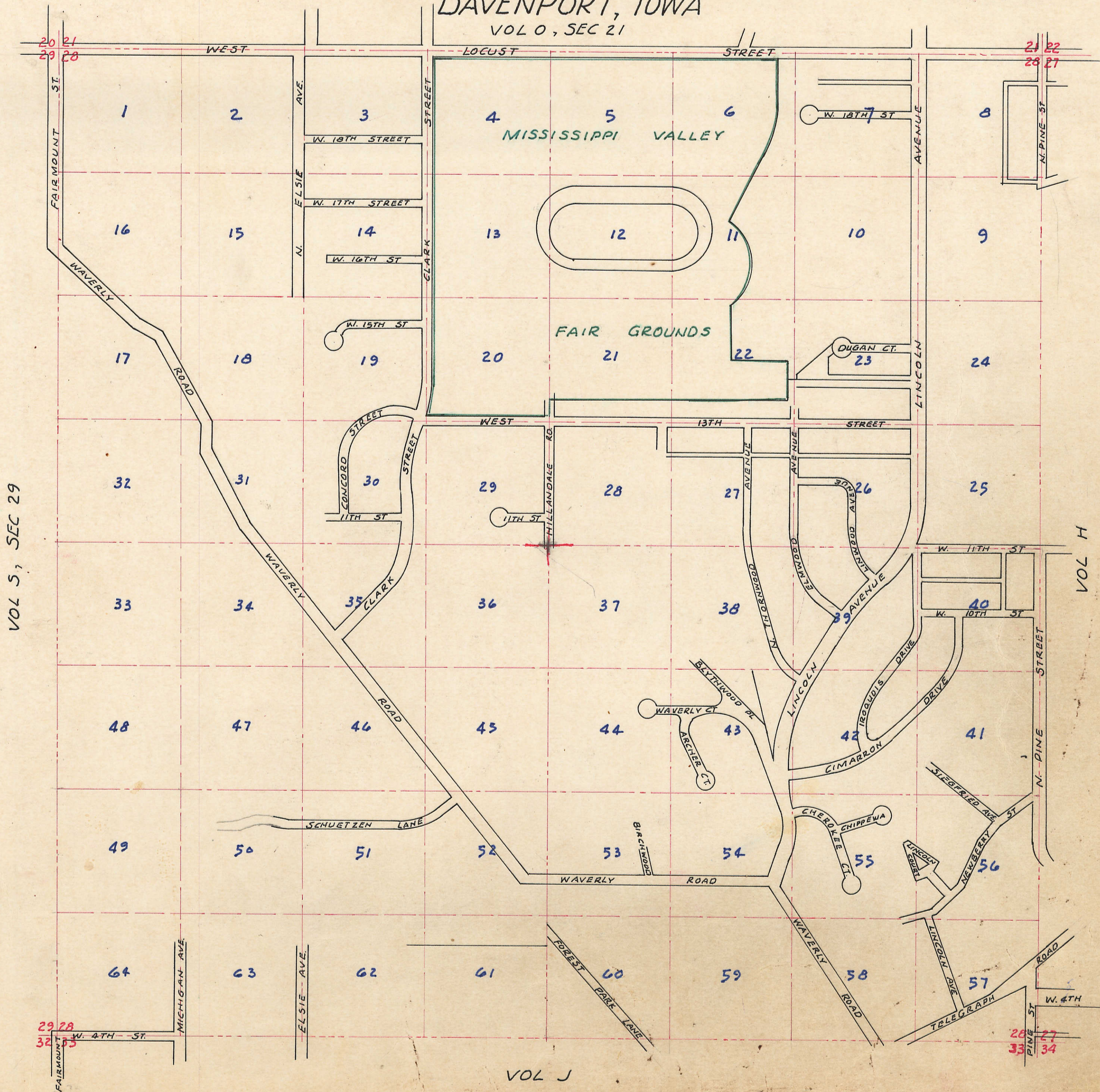


VOLUME I INDEX MAP  
 SECTION 28, TOWNSHIP 78 NORTH, RANGE  
 3 EAST OF THE FIFTH PRINCIPAL MERIDIAN

DAVENPORT, IOWA

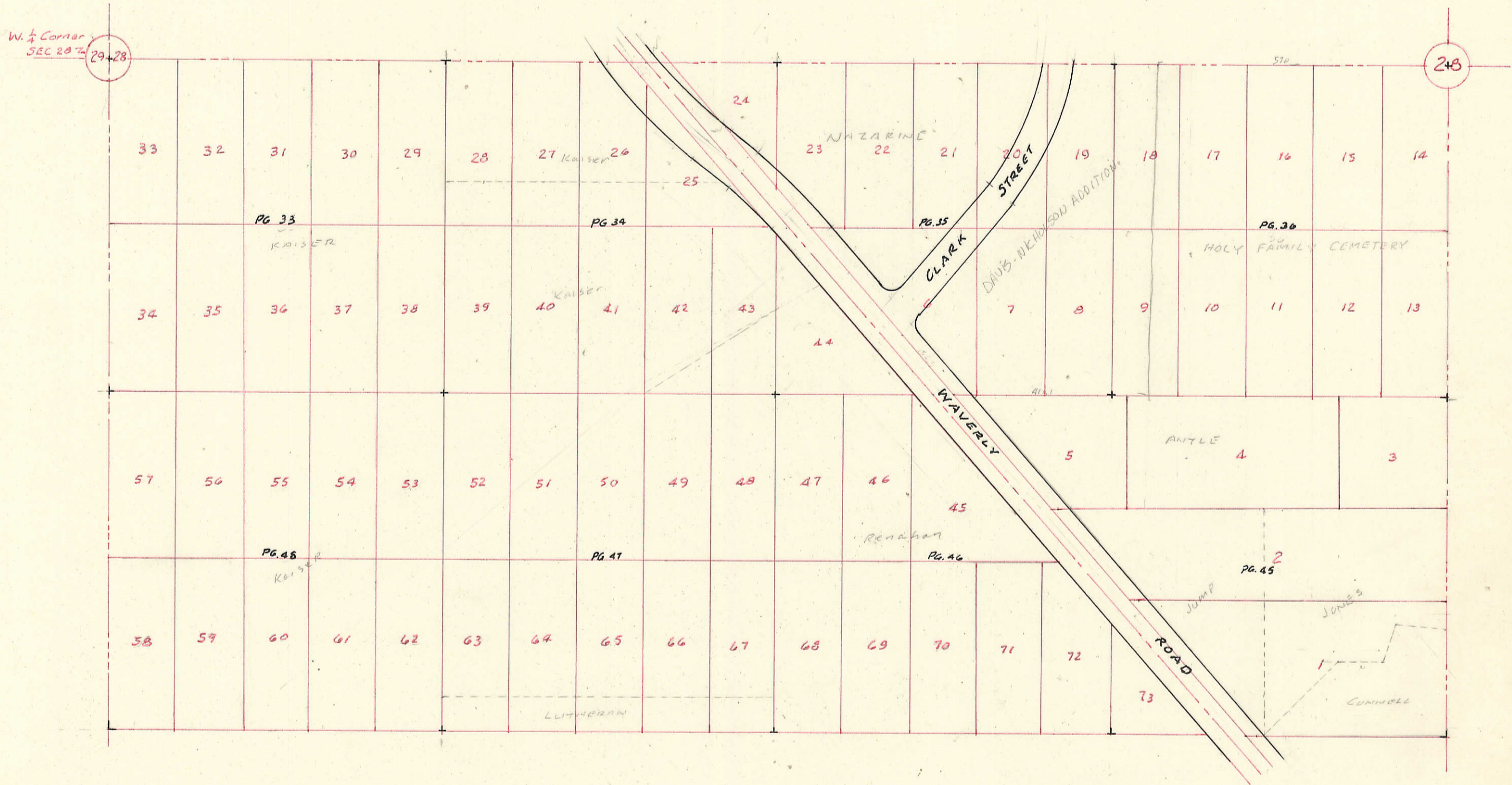
VOL O, SEC 21



VOL S, SEC 29

VOL H

VOL J



JOSEPH H. GLASPEY SUBDIVISION  
 OF THE N. 1/2 OF THE SW 1/4 OF SEC. 28-78-3